

Plastic Indicative Seals



Starseal (Variable Length)

Material

Body : Polypropylene

Jaw : Stainless Steel



Application

- Airline food / Duty free Trolleys
- Cash Bag / ATM Cassettes
- Courier Bag
- Postal and Mail order Bags
- Inland Transportation
- Hospitals / Clinical waste bag
- Coil Boxes

Key Features

- Each seal conforms to a variable loop design
- Extra secure stainless steel metal jaw
- Require no tool for removal
- Smooth strap is a more user friendly than conventional strap designs.
- Small strap diameter is suitable for application will small sealing apertures

Marking

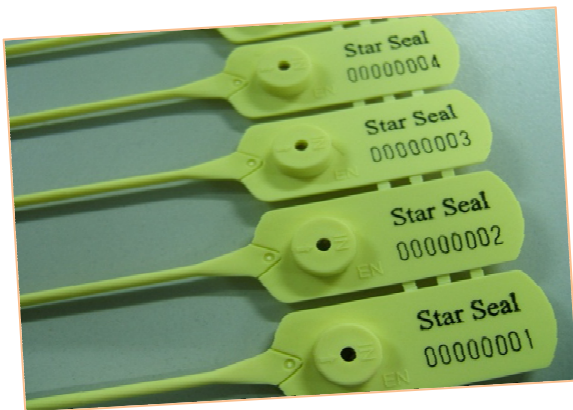
- Laser marking or Hot Stamping
- Customize Letter / Logo / Moulded Logo
- Sequential numbering
- Laser Barcoding

Colours

- Available in standard colors , Green,Red,Blue,White,Yellow
- Special colors are available on request , subject to minimum order quantity
- Available in mat of 10 pieces.

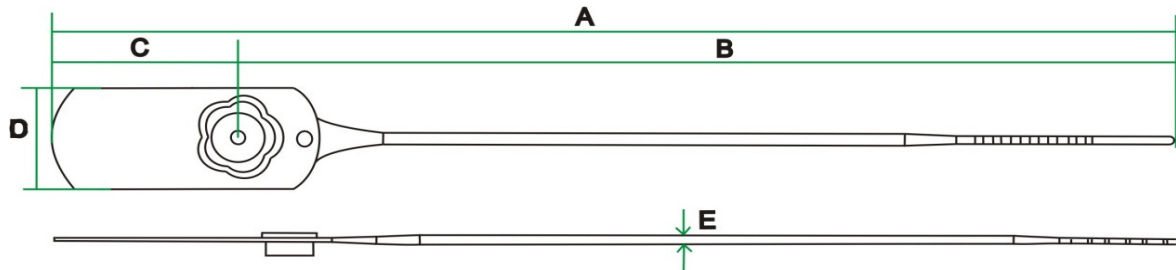
Properties

- Average Breaking Strength : About 15kgs

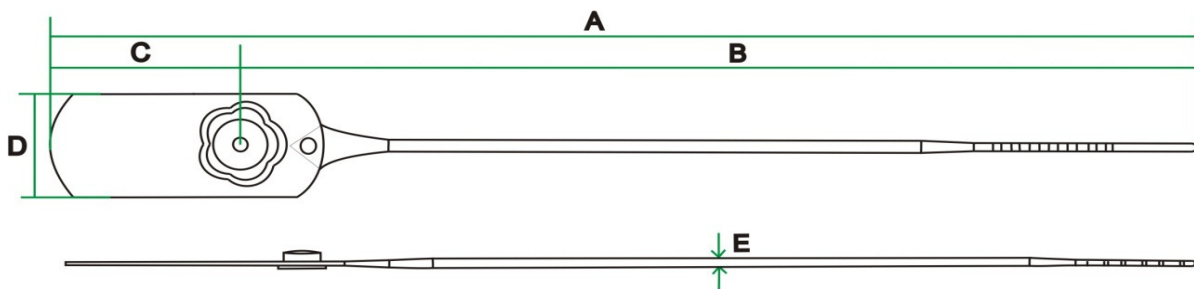


Dimensions

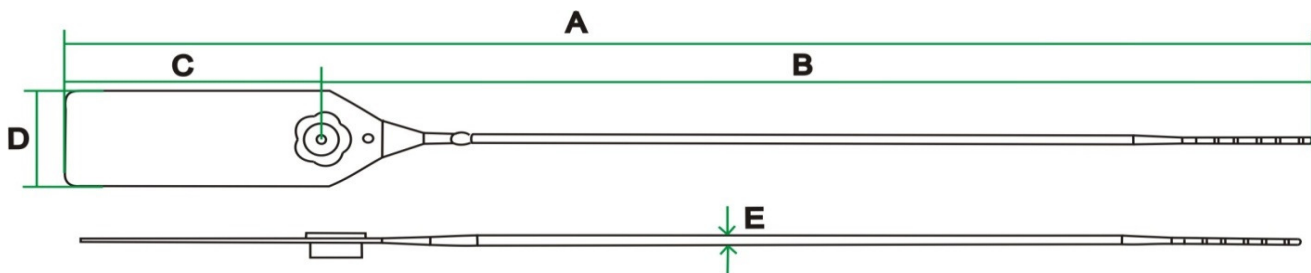
Model Name	del Dimension					Packaging		
	A (mm)	B (mm)	C (mm)	D (mm)	E (mm)	Quantity / Box (pieces)	Weight / Box (Kgs)	Dimension (mm)
Starseal 150mm	180	150	30	18	2.2	1,000	1.60	208 x 188 x 300
Starseal 150mmLF	184	150	34	18	2.2	1,000	1.60	208 x 188 x 325
Starseal 150mmTTL	184	150	34	18	2.2	1,000	1.60	208 x 188 x 325
Starseal 200mm	230	200	30	18	2.2	1,000	2.10	240 x 208 x 302
Starseal 200mmLF	268	212	55	23	2.2	2,000	5.80	505 x 285 x 315
Starseal 200mmTL	268	212	55	23	2.2	2,000	5.80	505 x 285 x 315
Starseal 330mmLF	398	342	55	23	2.2	1,000	3.50	418 x 260 x 315
Starseal 330mmTL	398	342	55	23	2.2	1,000	3.50	418 x 260 x 315



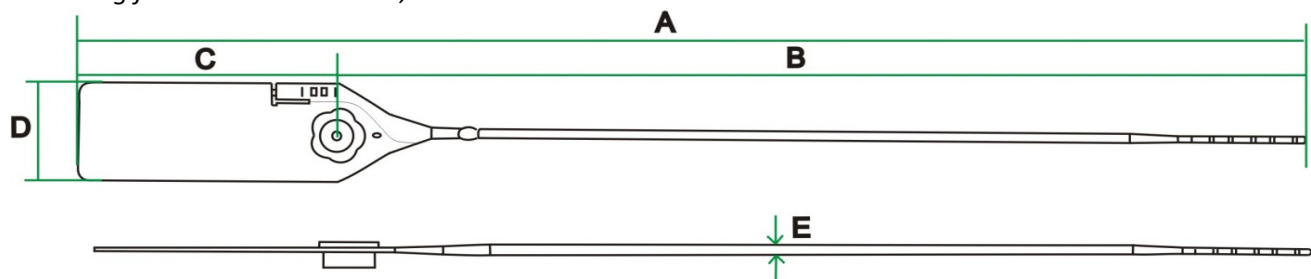
Line Drawing for Starseal 150mm , Starseal 200mm



Line Drawing for Starseal 150mmLF , Starseal 150mmTTL



Line Drawing for Starseal 200mmLF , Starseal 330mmLF



Line Drawing for Starseal 200mmTL , Starseal 330mmTL